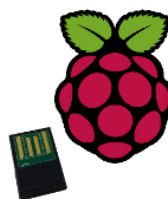


# Easy and Wireless Home Automation



## WiBee-Package



## User manual

Version 1.0

Document reference : UM\_WIBEE-PACKAGE\_20140603\_001\_01\_00.doc

## WARRANTY

The device supplied to the buyer and/or the recipient is guaranteed by CLEODE against any malfunctions originating from a design and/or manufacturing flaw, for a period of twelve (12) months following delivery. The buyer and/or recipient is (are) responsible for proving the existence of the said defects or flaws. This warranty is applicable in accordance with articles 1641 to 1648 of the French Civil Code and in compliance with the French statutory warranty. The warranty covers the replacement free of charge of devices and parts affected by a design and/or manufacturing flaw excluding conspicuous defects in the device that are covered by the buyer and/or the recipient.

In order to invoke the warranty, the buyer must immediately send written notice to CLEODE of the flaws that it attributes to the device. It must enable CLEODE to have access to the device to observe these defects and repair them. The warranty provided by CLEODE is strictly limited to the equipment provided and shall only have for effect the replacement or repair, at CLEODE's expense, on its own premises, of all devices or parts that are not functioning as a result of defects or flaws. CLEODE reserves the right to modify the devices in order to comply with the warranty.

The warranty does not apply to replacement or repairs that may result from normal wear and tear of devices, systems or products, damage or accidents resulting from negligence, failure to supervise or maintain, or incorrect use of the devices, systems and/or products.

The maintenance service is provided by CLEODE with all reasonable care possible and in compliance with the current state of the arts.

The exchange of parts or repairs performed under the warranty cannot result in extending the length of the warranty. In no event can the unavailability of the device due to servicing give rise to compensation for any reason whatsoever. The seller is released from all obligations relating to the warranty if the product or device has been modified without prior written consent, or if original parts have been replaced by parts which it has not manufactured without prior consent. If unforeseen damage is caused by the device, it is expressly agreed that the seller can only be liable for the reimbursement of monies received for the purchase of the device if it has been destroyed. Under no circumstances can the seller be held liable for indirect or contingent damage. The seller is released from any liability and the buyer waives any rights against it if an accident or direct or indirect damage is caused to the buyer following a defect, incorrect usage, incorrect maintenance or normal wear of the device sold.

## **TABLE OF CONTENT**

---

<b><u>I</u></b>	<b><u>INTRODUCTION</u></b>	<b>7</b>
<b><u>II</u></b>	<b><u>INSTALLATION</u></b>	<b>7</b>
<b>II.1</b>	<b>UPDATE THE LIST OF PACKAGES</b>	<b>7</b>
<b>II.2</b>	<b>INSTALL APACHE</b>	<b>7</b>
<b>II.3</b>	<b>INSTALL A DATABASE</b>	<b>7</b>
II.3.1	INSTALL MYSQL SERVER	7
II.3.2	INSTALL POSTGRES SQL SERVER	8
<b>II.4</b>	<b>INSTALL WIBEE PACKAGE</b>	<b>8</b>
<b>II.5</b>	<b>VERIFY DEPENDENCIES</b>	<b>8</b>
<b><u>III</u></b>	<b><u>CONNEXION ON THE WIBEE</u></b>	<b>9</b>
<b>III.1</b>	<b>WEB INTERFACE</b>	<b>9</b>
<b>III.2</b>	<b>CLEOBEE™</b>	<b>9</b>
<b><u>IV</u></b>	<b><u>TECHNICAL SUPPORT</u></b>	<b>10</b>

---

## LIST OF FIGURES

---

Figure 1 : Connexion with WEB Interface.....	9
Figure 2 : Connexion with CleoBee™ .....	9

## TABLE OF REVISIONS

---

Version	Author(s)	Version description	Date
0.1	CLEODE	Initial Version	03/06/2014
1.0	CLEODE	Validated document	03/06/2014

## GLOSSARY

---

<b>CleoBee™</b>	ZigBee Network management of CLEODE Company
<b>UBEE Nano</b>	ZigBee Coordinator of CLEODE Company

## I INTRODUCTION

---

The package WiBee with an include UBee nano key becomes a Controller ZigBee autonomous able to manage, to control and to monitor a set of objects independently ZigBee through an embedded Web site and / or a CleoBee™ remote application.

The package WiBee utilizes the Debian or Ubuntu or Raspbian distribution and requires mysql or postgresQL database and apache2 http server.

## II INSTALLATION

---

To install the package WiBee, you will:

- Update the list of packages,
- Install Apache,
- Install a DataBase MySQL or postgresQL,
- Install package,
- Verify dependencies,

### II.1 UPDATE THE LIST OF PACKAGES

Before installing the WiBee package, it is advisable to update the list of package known by your system with the command:

```
sudo apt-get update
```

### II.2 INSTALL APACHE

Previously, you must have install Apache on your system with the following commands:

Install Apache Server:

```
sudo apt-get install apache2  
sudo apt-get install php5
```

### II.3 INSTALL A DATABASE

Before installing the WiBee package, it is advisable to install a database.

#### II.3.1 INSTALL MYSQL SERVER

```
sudo apt-get install php5-mysql  
sudo apt-get install mysql-server
```

Provide a password for the root MySQL, it will be required later when installing the package Wibe-Ubuntu.

### II.3.2 INSTALL POSTGRESQL SERVER

```
sudo apt-get install php5-pgsql
sudo apt-get install postgresql
```

## II.4 INSTALL WIBEE PACKAGE

Previously, you must have WiBee license that will be required during installation.

Once the package is downloaded to the system, install the package WiBee (here the debian package for mysql and i386) with the command:

```
sudo dpkg -i wibee-my_2.0_i386.deb
```

It will display the following informations:

Please enter your Wibe license (aaaaa-bbbbb-cccc--ddddd-eeee) :

```
aaaaa ? : xxxxx
bbbbbb ? : xxxxx
cccc ? : xxxxx
dddddd ? : xxxxx
eeee ? : xxxxx
```

According to the package, you have to enter a password to the database.  
Enter mysql root password:

Select the Apache configuration file:

- 1) 000-default.conf
- 2) 000-default.conf.bak
- 3) default-ssl

Please enter your choice: 1

## II.5 VERIFY DEPENDENCIES

To verify dependencies, type the following command:

```
sudo apt-get -f install
```

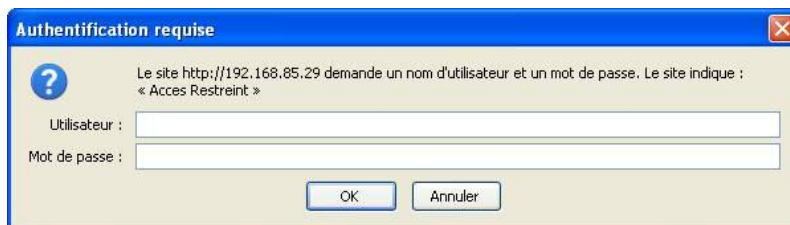


## III CONNEXION ON THE WIBEE

### III.1 WEB INTERFACE

After installation, you can now connect to the WiBee website through the following link:

`http://<IP address of the system>/wibee/`



**Figure 1 : Connexion with WEB Interface**

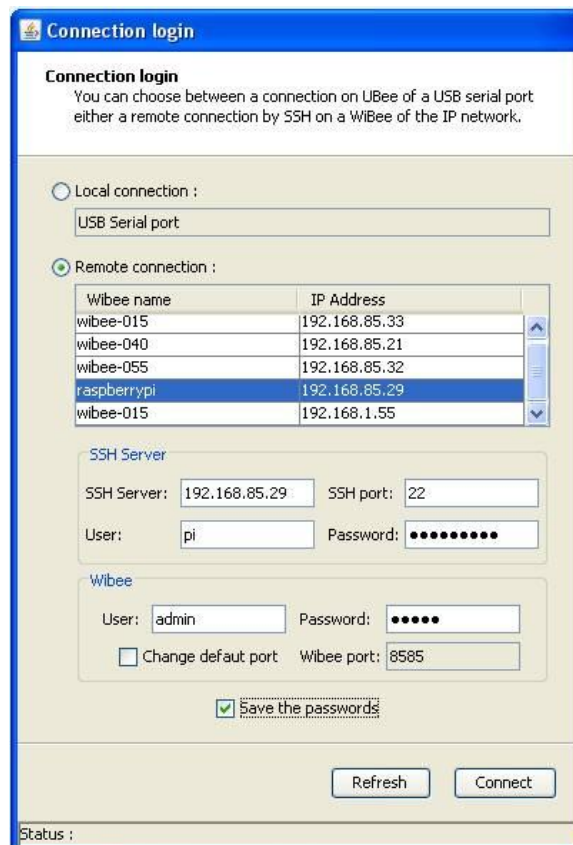
The username and password are admin / admin.

The password can be changed by the administration page of the website.

### III.2 CLEOBEE™

You can also connect in to the WiBee application by CleoBee remote.

Note: The admin user of the website and the admin user CleoBee remote are completely different.



**Figure 2 : Connexion with CleoBee™**

### **SSH Server**

SSH Server: xxx.xxx.xxx.xxx / port SSH : 22

User: xxxxxxxxx / Password: xxxxxxxxx

### **Wibee**

User: admin / Password : admin

Wibee port: 8585

The password can be changed in the CleoBee "WiBee menu / Change your password ...".

## **IV TECHNICAL SUPPORT**

---

Defective equipments shall be returned to CLEODE with the following documents:

- A copy of the delivery slip
- A detailed description of the default and the test context

The maintenance period is typically four (4) weeks starting from the date of reception of the equipment at the CLEODE headquarters.

The repair is ensured by the manufacturers of the hardware for not to void the warrenty of the item.

The serial number may be requested by CLEODE to identify your hardware.

All support requests should be sent to the following address or by email to [contact@cleode.com](mailto:contact@cleode.com)



CLEODE S.A.  
Technical Support Division

3 rue Thomas Edison  
22300 Lannion

Phone : +33 (0) 2 96 48 68 18

Fax : +33 (0) 2 96 48 19 11

E-mail : [contact@cleode.com](mailto:contact@cleode.com)

Web : <http://www.cleode.com>

**End of User manual**